



# Funding for your Hedges

Colin Hedley from FWAG Southeast



**CURRENTLY AVAILABLE:**



**WOODLAND**  
**TRUST**

## **MOREhedges Scheme:**

### **Overview**

- Designed for planting of new hedgerows that connect with existing or new woodland.
- Offers up to 75% funding for projects planting 100 metres or more of hedging.
- Includes saplings, tree protection, and expert advice.
- Requires planting a large tree every six metres along the hedge.

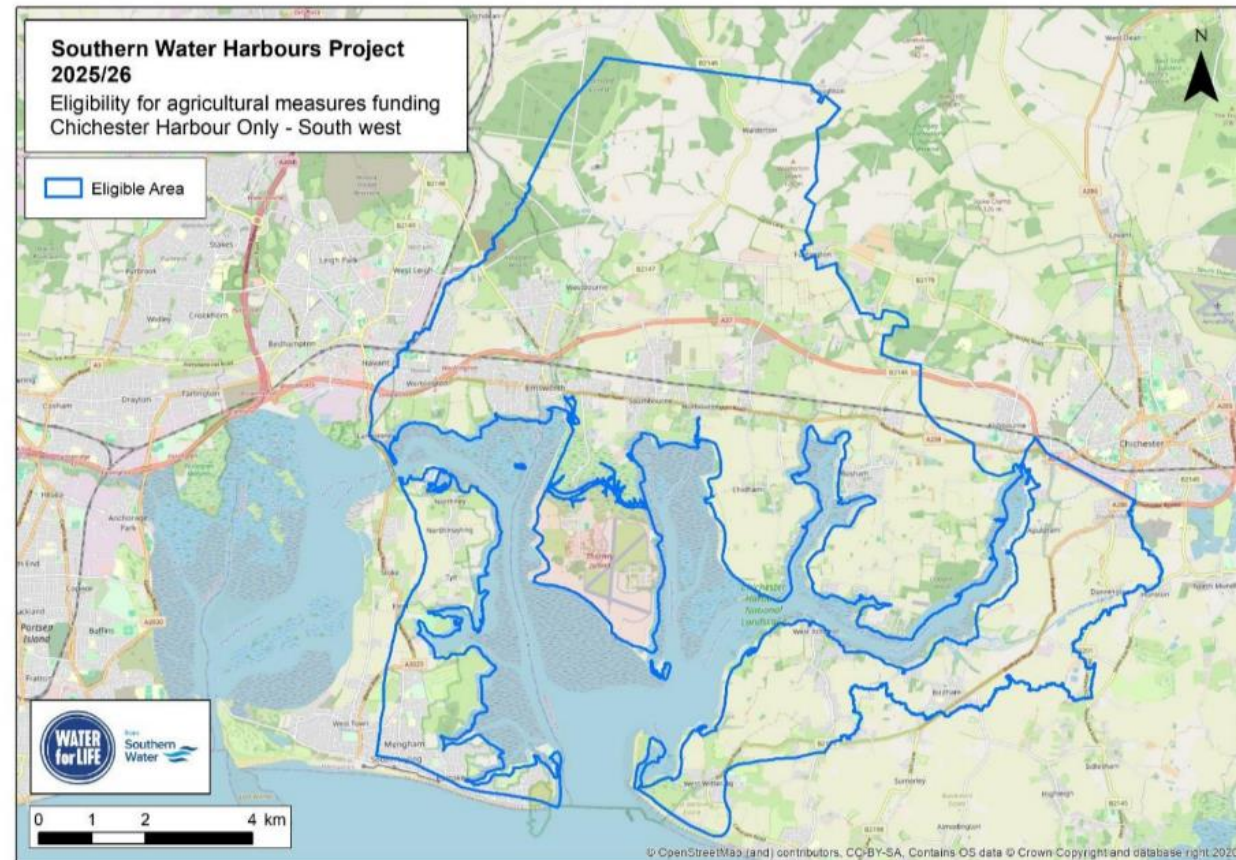
### **Eligibility Criteria**

- Must plant at least 100 metres in a single run.
- Hedge must connect with:  
0.2 hectares of woodland or  
Woodland via existing hedgerows within 500m.

# Southern Water Capital Grants

- Awards up to **£10,000** for 100% of total project costs for costs incurred in planting **new hedgerows, gapping up** or **extending old hedgerows**, planting areas of trees or shrubs; and/or
- Up to £1,500 per applicant to take expert advice in preparing either agricultural or conservation focussed projects
- Portsmouth and South East Water have offered similar schemes, so it is worth checking what is available in your area

Eligibility Map for Farming Measures





# HAMPSHIRE FOREST PARTNERSHIP

*a legacy in leaves*

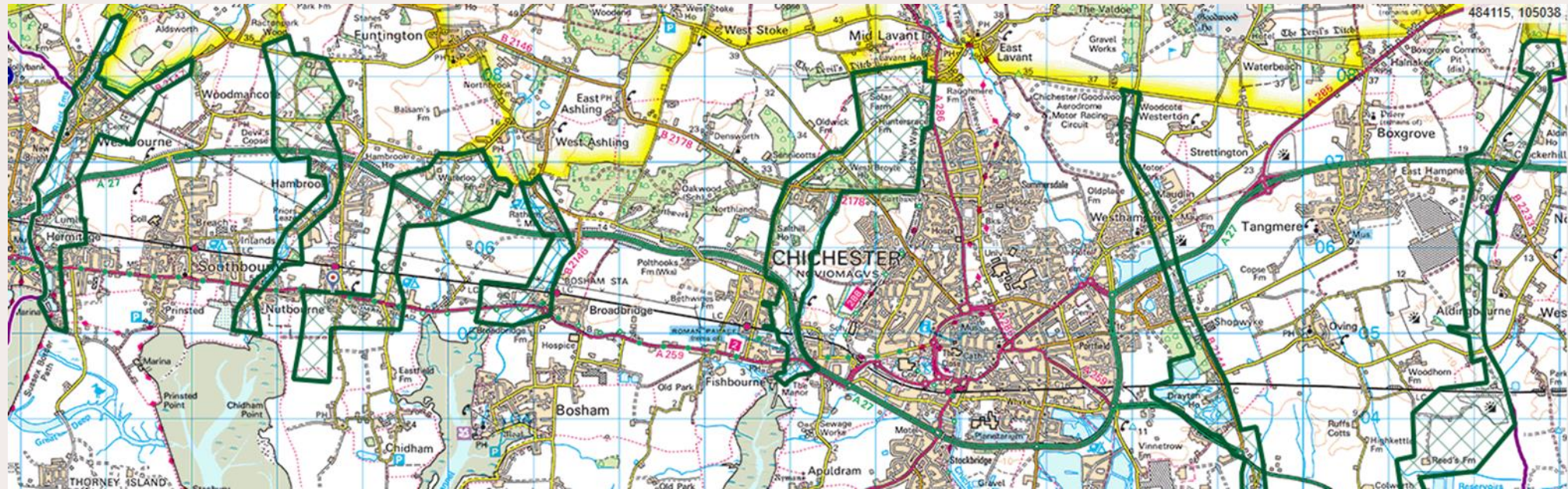
“The **Hampshire Forest Partnership** supports farmers and landowners so you can integrate trees into your farms and on land holdings. We can provide **funding** support, **advice** and **guidance**, knowledge, and information resources.”

The **Shoots Along the Routes** campaign supports farmers and landowners to plant hedges along roadways, riversides and routes that connect remote habitats and woodlands.

They will supply trees, whips and protection.

# District Councils

- Often have their own **Tree Officers** and local initiatives such as **“Strategic Wildlife Corridors”**
- It is worth asking if funding is available for hedge projects in your area



# National Highways 3 Million Trees

- This project is giving away free trees in England to local authorities, charities, NGOs, community groups, education institutions, landowners and farmers
- A selection of species are available, for orders of 2,500-50,000 whips per application

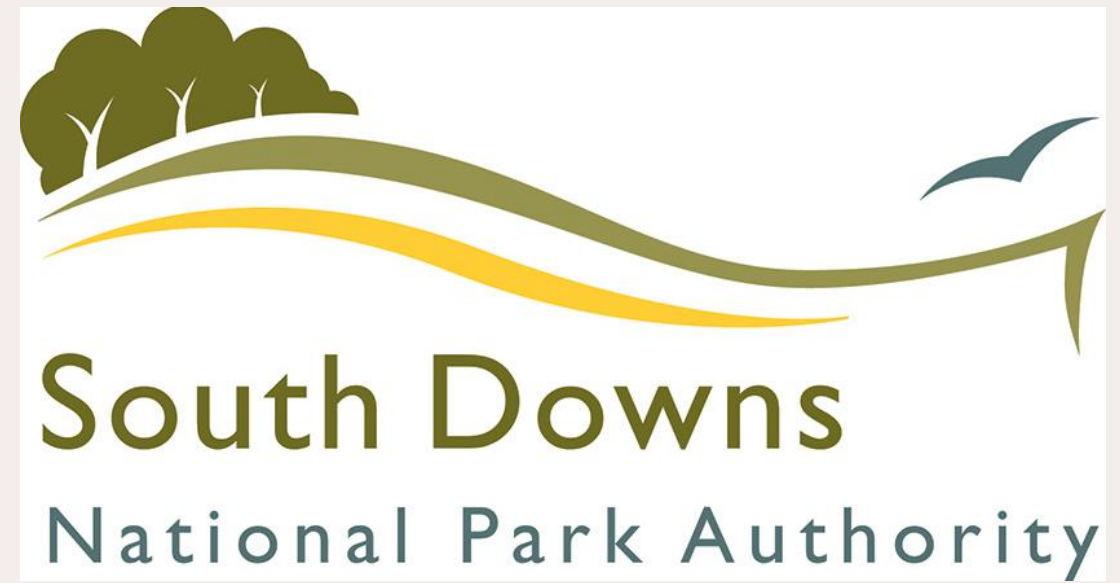




**BECOMING AVAILABLE (hopefully) :**

- SDNPT has offered several funds recently covering trees and hedges, including **Trees for the Downs** and **ReNature**
- Information on new rounds of these can be found on the South Downs Trust website.
- We are also hearing positive sounds that **Farming in Protected Landscapes (FiPL)** funding will be returning for 2026
- This scheme, delivered by the National Parks and Landscapes, funds projects that deliver outcomes for “**climate, nature, people and place**”

**SOUTH DOWNS**  
**NATIONAL PARK TRUST**





Department  
for Environment  
Food & Rural Affairs



# Countryside Stewardship



- CS Capital Grants is predicted to reopen in 2026 and previously offered **£22.97** for **planting**, **£5.33** for **coppicing**, and **£13.52/£19.34** for **laying**
- Under HT there was also a **£7.06** supplement for “**substantial pre-work**” where slope, width or bramble/brash were issues
- Fencing grants of £6.34 for wire fencing and £7.47 for sheep netting
- Search tool is still available on-line
- These items are currently still available for anyone applying for a CS Higher Tier agreement

# Sustainable Farming Incentive

Again, we are being told that SFI will reopen in 2026 but not exactly when.

 Three Key Hedgerow Actions in SFI:

## 1. **CHRW1: Assess and Record Hedgerow Condition**

- Understand and document hedgerow health and structure
- Payment: **£5 per 100m (one side) per year**

## 2. **CHRW2: Manage Hedgerows**

- Maintain hedgerows with varied height and width.
- Payment: **£13 per 100m (one side) per year**

## 3. **CHRW3: Maintain or Establish Hedgerow Trees**

- Encourage tree growth within hedgerows.
- Payment: **£10 per 100m (both sides) per year**

# Find Out More:



- <https://www.woodlandtrust.org.uk/plant-trees/trees-for-landowners-and-farmers/morehedges-application/catchmentschemes@southernwater.co.uk>
- <https://www.hants.gov.uk/landplanningandenvironment/hamphshireforestpartnership/get-involved/farmers-and-landowners>
- [treeplanting@hants.gov.uk](mailto:treeplanting@hants.gov.uk)
- <https://treecouncil.org.uk/grants-and-guidance/our-grants/national-highways-3-million-trees/grants@treecouncil.org.uk>
- <https://southdownstrust.org.uk/grants/>
- <https://www.southdowns.gov.uk/custodians/farming/farming-in-protected-landscapes-fipl/FiPL@southdowns.gov.uk>
- <https://www.gov.uk/capital-grant-finder>
- <https://www.gov.uk/find-funding-for-land-or-farms>